



Control Your Video

VIDEO WALL VIDEO PROCESSORS
MULTIVIEWERS DIGITAL SIGNAGE
EXTENDERS CONTROL CENTERS
SCALERS WIRELESS

Control Commands



Model #: HDM-SPLITPRO-4A

© 2015 Avenview Inc. All rights reserved.

The contents of this document are provided in connection with Avenview Inc. ("Avenview") products. Avenview makes no representations or warranties with respect to the accuracy or completeness of the contents of this publication and reserves the right to make changes to specifications and product descriptions at any time without notice. No license, whether express, implied, or otherwise, to any intellectual property rights is granted by this publication. Except as set forth in Avenview Standard Terms and Conditions of Sale, Avenview assumes no liability whatsoever, and claims any express or implied warranty, relating to its products are strictly prohibited.

SECTION I: COMMAND PROTOCOL FORMAT (RS-232 SERIAL PORT)

I. SERIAL PORT SETTING

- Baud Rate: 115200bps
- Data Bit: 8 bits
- Parity: None
- Flow Control: None
- Stop Bit: 1

RS-232 Wiring (Cross Cable Connection)

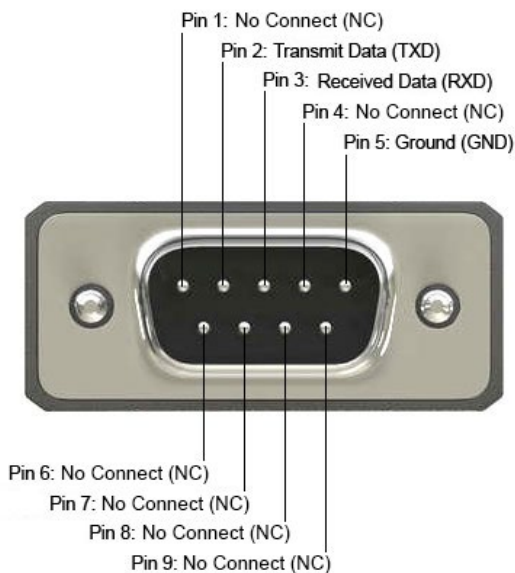
HDM-SPLITPRO-4A	
PIN	Assignment
1	NC
2	TxD
3	RxD
4	NC
5	GND
6	NC
7	NC
8	NC
9	NC



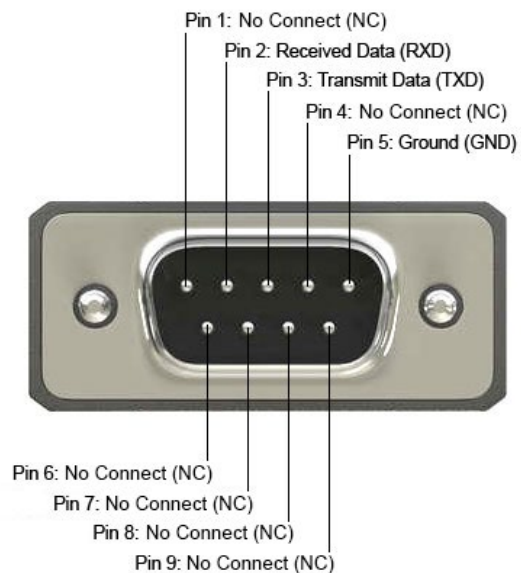
Remote Controller(PC)	
PIN	De finition
1	NC
2	RxD
3	TxD
4	NC
5	GND
6	NC
7	NC
8	NC
9	NC



RS232 Pinout



RS232 Pinout



2. RS-232 & TELNET COMMANDS

All commands will be not executed unless followed with a carriage return (0x0D) and commands are case sensitive.

Command	Description
RESO 0~18	SET OUTPUT RESOLUTION (0) 480p, (1) 576p, (2) 720p 50Hz. (3) 720p 60Hz. (4) 1080p 24Hz. (5) 1080p 25Hz. (6) 1080p 30Hz. (7) 1080p 50Hz, (8) 1080p 60Hz, (9) 1024x768 60Hz, (T0) 1280x800 60Hz, (11) 1280x1024 60Hz. (12) 1366x768 60Hz. (13) 1440x900 60Hz, (14) 1600x900 60Hz. (15)1600x1200 60Hz, (16) 1680x1050 60Hz, (17)T920x1200 60Hz, (18) Nativ
OSDDIS 0/ 1	ENABLE DISABLE ONSCREEN DISPLAY (0) OFF, (1) ON
OSDH 0~20	OSDH 0~20 OSD H OFFSET 0-20
OSDV 0-20	OSDV 0-20 OSD V OFFSET 0-20
OSDTIME 0"-50	OSD TIMEOUT 0'-50
OSDGAIN 0-10	OSD GAIN VALUE 0-10
BRI 0~40~100	SET BRIGHTNESS VALUE FOR CHANNEL (0) All. (1~4) CHANNEL, (0~100) VALUE
SAT 0~4 0-100	SET SATURTATION VALUE FOR CHANNEL PORT (0) All. (1~4) CHANNEL, (0~100) VALUE
HUE 0~4 0~100	SET HUE VALUE FOR CHANNEL PORT (0) All, (1~4) CHANNEL. (0-400) VALUE
HSIZE 1-4 0~X	SET IMAGE HORIZONTAL SIZE (1~4) CHANNEL (0--X) X=HORZONT AL PIXEL FOR CURRENT RESOLUTION



Command	Description
VSIZE I-4 O~X	SET IMAGE VERTICAL SIZE (I-4) CHANNEL (0-X) X=VERTICAL PIXEL FOR CURRENT RESOLUTION
HPOS I -4 O~X	SET HORIZONTAL POSITION or SPECIFIED CHANNEL (I~4) CHANNEL, (0-x) X=HORIZONTAL PIXEL FOR CURRENT RESOLUTION
VPOS I~40~X	SET VERTICAL POSITION OF SPECIFIED CHANNEL (I-4) CHANNEL (0~X) X=VERTICAL PIXEL FOR CURRENT RESOLUTION
IMAGE I~4 0~I	CHANNEL(S) OUTPUT ON/OFF (I~4) CHANNEL (0/ I) OFF/ON
PRI I--4 I--4	SET CHANNEL PRIORITY (I--4) CHANNEL (I' -4) PRIORITY
LABEL I~4 XXX	ASSIGN A VIDEO NAME (I~4) VIDEO. (xxx) ABCDEFGH...
STORE I ~4	SAVE THE CURRENT WINDOW STATE TO FA v. (I~4) FA v.
RECALL I' -I 2	RECALL A WINDOW STATE (I) WINDOW A, (2) WINDOW B, (3) WINDOW C, (4) WINDOW D, (5) WINDOW E, (6) WINDOW F, (7) WINDOW G, (8) WINDOW H, (9) WINDOW FAV. I, (10) WINDOW FAV. 2, (1 I) WINDOW FAV. 3, (I 2) WINDOW FAV. 4
MIRROR O/I	ENABLE/DISABLE MIRROR EFFECT (o/I) OFF/ON
FADE O~2T	ROTATE 0~3 SET VIDEO ROTATION VIDEO TO PRESET POSITIONS (O) ROTATE OFF. (I) R90, (2) L90, (3) 180
CHRC R/G/B MIN/MAX 0~255	SET THE RG8 COLOR RANGE FOR THE CHROMA KEY (R/G/B) coLoR CHANNEL (MIN/MAX) coLoR VALUE (o~ I5) sET PRESENT VALUE o~255 RGB MAX (0)15, (I)3 I, (2)47, (3)63, (4)79, (5)95, (6) I I I, (7) I27. (3) I43, (9) I59, (I o) I75, (I I) I9 I, (I2) 2o7, (I3) 223, (I4) 239, (I5) 255 RGB MIN (o)oo, (I) I6, (2)32, (3)43. (4)64. (5)30. (6)96, (7) I I2, (3) I23, (9) I44, (I o) I6o, (I I) I76, (I2) I92, (I3) 2o3. (I4) 224, (I5) 24o



Command	Description
CHRSW 0/1	SET THE CHROMA KEY ON/OFF (0) OFF, (1) ON
IPMODE 0/1	SET IP MODE TO DHCP OR STATIC (0) DHCP, (1) STATIC
IPADD XXX.XXX. XXX.XXX	SET IP ADDRESS (XXX) 0~255
MAADD XXX. XXX.XXX.XXX	SET SUBNET ADDRESS (xxx) 0~255
GAADD XXX. XXX.XXX.XXX	SET GATEWAY ADDRESS (XXX) 07-255
ETHTIME 0~6	ETHERNET TIMEOUT (0) OFF, (1) 10 MINUTE, (2) 20 MINUTE, (3) 30 MINUTE, (4) 40 MINUTE. (5) 50 MINUTE, (6) 60 MINUTE
RELINK	RELINK THE UNIT IN 2 SECONDS
DEFAULT	RESET THE UNIT TO FACTORY DEFAULTS
vICH 1~4 0~4	VIDEO CHANNEL COMMAND (1~4) VIDEO. (0) ALL CHANNEL OUTPUTS. (1~4) CHANNEL OUTPUTS
MUTE 0/1	MUTE AUDIO (0) OFF, (1) ON
POw 0/1	POwER THE UNIT ON/OFF (0) OFF, (1) ON
AUDIO 1~4	CHANGE OUTPUT AUDIO TO SPECIFIED SOURCE (1~4) AUDIO SOURCE
IMRE B/C/S/H	RESET THE IMAGE TO FACTORY DEFAULTS (B) BRIGHTNESS, (C) CONTRAST, (S) SATURATION, (H) HUE
PIRE	RESET THE UNIT PICTURE SETTINGS TO FACTORY DEFAULTS
CHRE 0~4	RESET THE wINDOWS sETnNGS TO FACTORY DEFAULTS (0) ALL CHANNEL OUTPUTS. (1~4) CHANNEL OUTPUTS
WICORE	SHOw CURRENT IP MODE HELP PRINTS ALL AVAILABLE RS-232/TELNET COMMANDS
RIPM	RESET THE WINDOW CONVERT To FACTORY DEFAULTS
IPCONFIG	SHOw IP CONFIGURATION
HELP	PRINTS ALL AVAILABLE RS-232/TELNET COMMANDS TO THE SCREEN
?	PRINTS ALL AVAILABLE RS-232/TELNET COMMANDS TO THE SCREEN

Using TCP/IP protocol, sent to Port 23 for Telnet communication.

The user can confirm from the OSD menu or through RS-232 command to check Telnet connection behavior



COMMAND B	DESCRIPTION
WND001	Change to window A
WND002	Change to window B
WND003	Change to window C
WND004	Change to window D
WND005	Change to window E
WND006	Change to window F
WND007	Change to window G
WND008	Change to window H
CH1001	Change CH1 to source 1
CH1002	Change CH1 to source 2
CH1003	Change CH1 to source 3
CH1004	Change CH1 to source 4
CH2001	Change CH2 to source 1
CH2002	Change CH2 to source 2
CH2003	Change CH2 to source 3
CH2004	Change CH2 to source 4
CH3001	Change CH3 to source 1
CH3002	Change CH3 to source 2
CH3003	Change CH3 to source 3
CH3004	Change CH3 to source 4
CH4001	Change CH4 to source 1
CH4002	Change CH4 to source 2
CH4003	Change CH4 to source 3
CH4004	Change CH4 to source 4
IO1000**	CH1 image off CH1
IO1001**	image on
IO2000**	CH2 image off CH2
IO2001**	image on
IO3000	CH3 image off CH3
IO3001	image on



COMMAND B	DESCRIPTION
IO4000	CH4 image off
IO4001	CH4 image on
MUT000	Mute off
MUT001	Mute on
AUD001	Change output audio to source 1
AUD002	Change output audio to source 2
AUD003	Change output audio to source 3
AUD004	Change output audio to source 4
FAD000*	Fade in-out off
FAD001*	Fade in-out on
CHR000*	Chroma key function off
CHR001*	Chroma key function on
MIR000*	Mirror function off
MIR001*	Mirror function on
ROT000*	Rotation function off
ROT001*	Rotation function right
ROT002*	Rotation function left
ROT003*	Rotation function up-side down
SFA001**	Store window format to FAV. 1
SFA002**	Store window format to FAV. 2
SFA003**	Store window format to FAV. 3
SFA004**	Store window format to FAV. 4
RFA001**	Recall window from FAV. 1
RFA002**	Recall window from FAV. 2
RFA003**	Recall window from FAV. 3
RFA004**	Recall window from FAV. 4
POW000	Power off
POW001	Power on

Note: Commands with one asterisk (*) will function under Windows A to D. Commands with two asterisks (**) will function under Windows E to H and FAV. 1 to 4.



3. TELNET SETTING

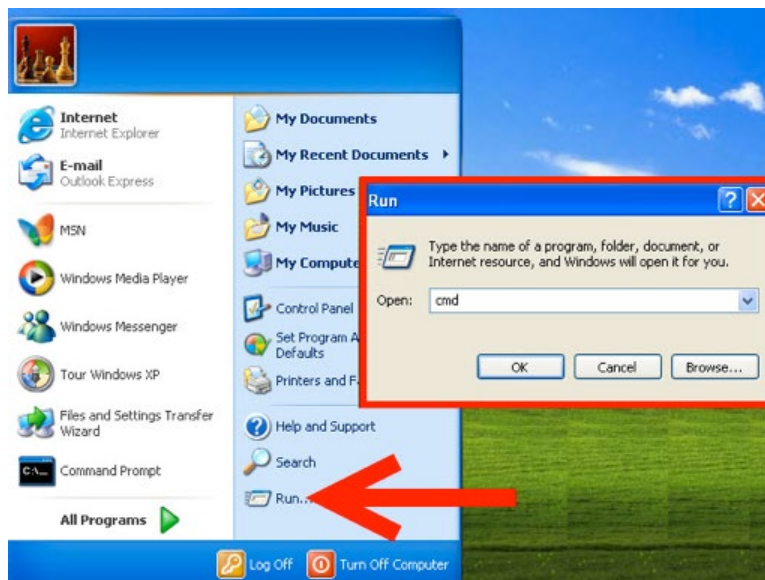
Using TCP/IP protocol, sent to Port 23 for Telnet communication.

The user can confirm from the OSD menu or through RS-232 command to check Telnet connection behavior.

To use the telnet control, please ensure that both the Multiviewer (via the 'LAN /CONTROL' port) and the PC/Laptop are connected to the active networks not directly connected.

To access the telnet control in Windows 7, click on the 'Start' menu and type "cmd" in the Search field then press enter. Under Windows XP go to the 'Start' menu and click on "Run", type "cmd" with then press enter.

Under Mac OS X, go to Go →Applications→Utilities→Terminal See below for reference. In the CMD window proceed



to type "telnet", then the IP address of the unit and "23", then hit enter/return.

Note: The IP address of the Multiviewer can be found by pressing Menu to activate the OSD and scroll to Ethernet Setup the info is listed.




```
C:\Windows\system32\cmd.exe
Microsoft Windows [Version 6.1.7601]
Copyright (c) 2009 Microsoft Corporation. All rights reserved.

C:\Users\Sales2> telnet 192.168.5.80 23
```

After connecting to the Multiviewer via IP address. Type “HELP” to preview the list of commands available.

```
192.168.0.35 - PuTTY
RTHTIME
RELINK
DEFAULT
VICH
MUTE
POW
AUDIO
IMRE
FIRE
CHRE
WICORE
RIFM
IPCONFIG
HELP
?
WND001
WND002
WND003
WND004
WND005
WND006
WND007
WND008
CH1001
CH1002
CH1003
CH1004
CH2001
CH2002
CH2003
CH2004
CH3001
CH3002
CH3003
CH3004
CH4001
CH4002
CH4003
CH4004
IO1000
IO1001
IO2000
IO2001
IO3000
IO3001
IO4000
IO4001
MUT000
MUT001
AUD001
AUD002
AUD003
AUD004
FAD000
FAD001
CHR000
CHR001
MIR000
MIR001
ROT000
ROT001
ROT002
ROT003
SFA001
SFA002
SFA003
SFA004
RFA001
```

Type “IPCONFIG” To confirm all IP configurations. To CHANGE the IP MODE to DHCP or STATIC; type “IPMODE 0/1” (For a full list of commands, see Section 1.3).

Note: Commands will not be executed unless followed by a carriage return. Commands are case-insensitive. If the IP is changed then the IP Address required for Telnet access will also change accordingly.

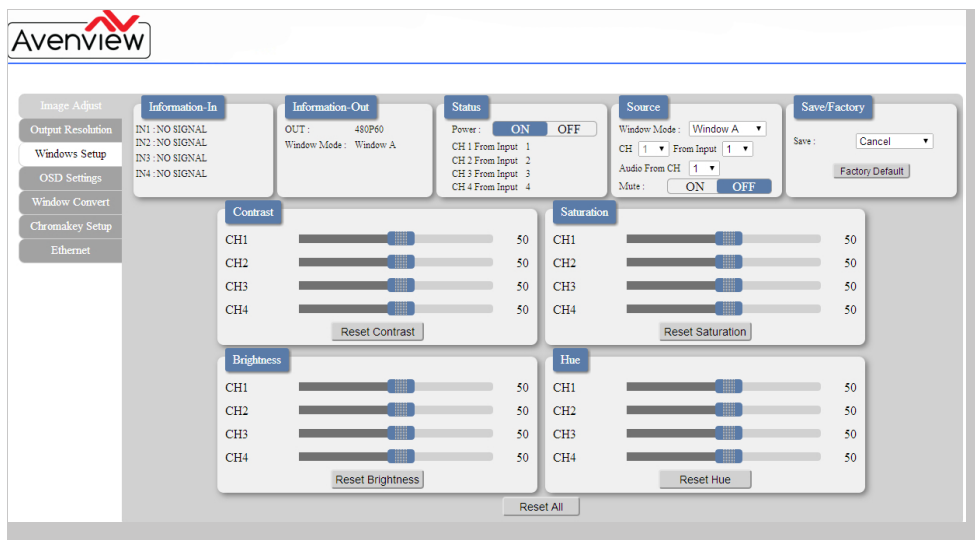


4. Web GUI Control

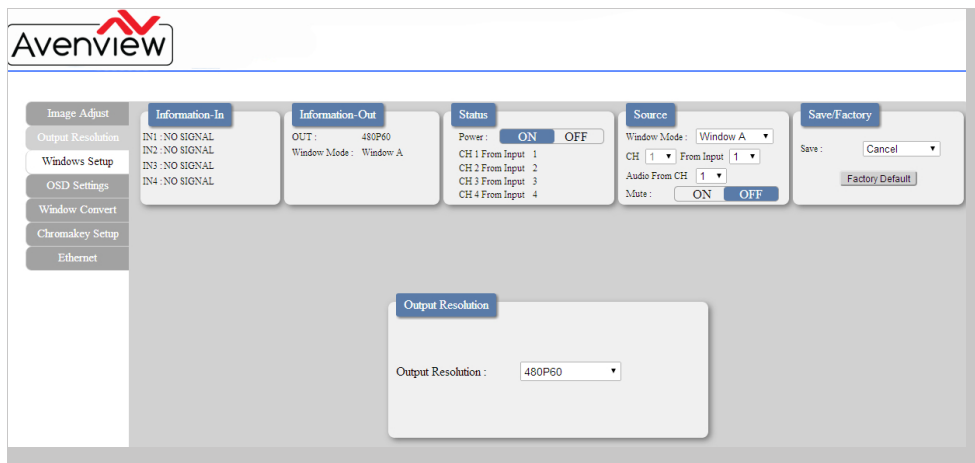
On a PC/Laptop that is connected to the same active network as the Scaler, open a web browser and type the unit's IP address on the web address entry bar. The browser will display the unit's Image Adjust, Output Resolution, etc.

To get the device IP address, press **MENU** button, scroll down to **ETHERNET**, write down the **DEFAULT IP** address and type it on any web browser address bar. (Default IP Address is 192.168.0.155)

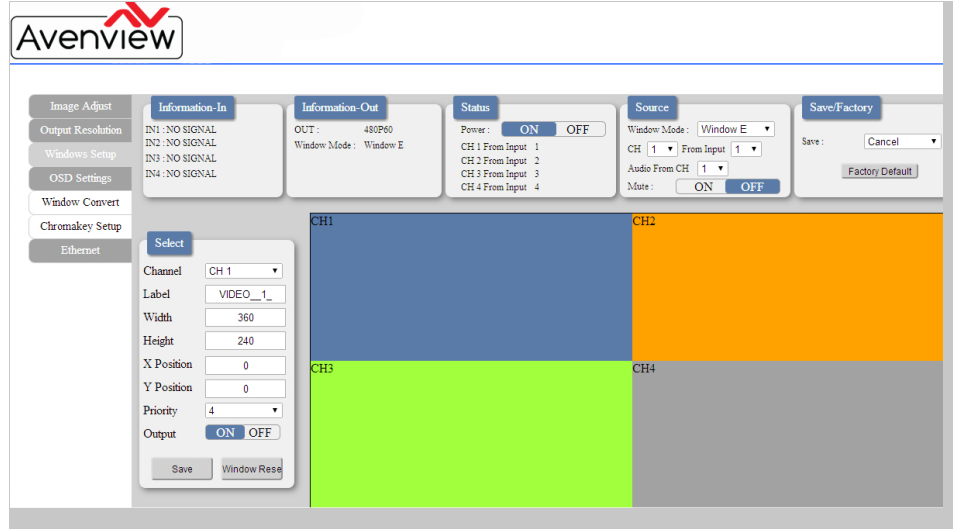
Click on the 'Image Adjust' tab to set the values of Contrast, Brightness, Saturation and Hue.



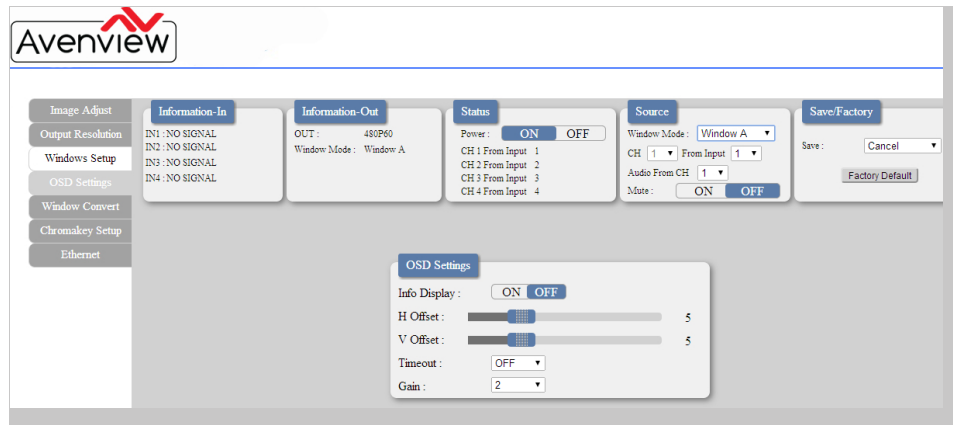
Click on the 'Output Resolution' tab to set the output display resolution.



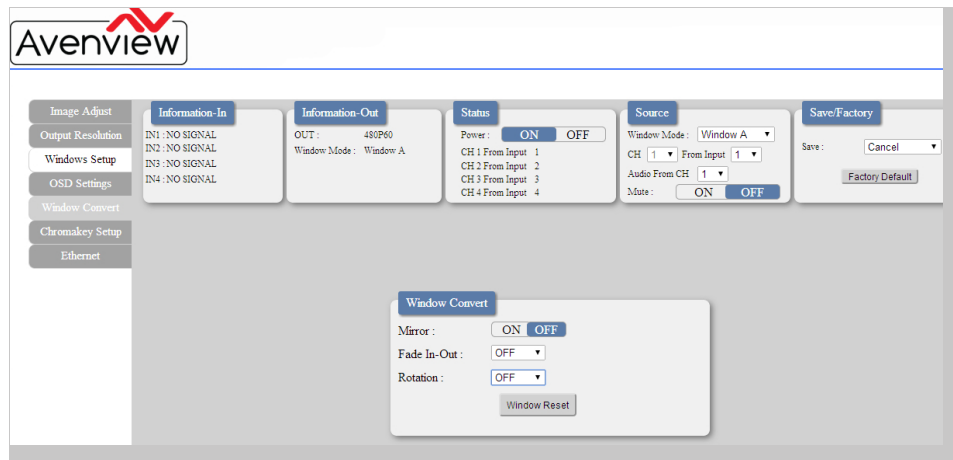
Click on the 'Windows Setup' tab to set the output display format. This function is only available under window E~H.



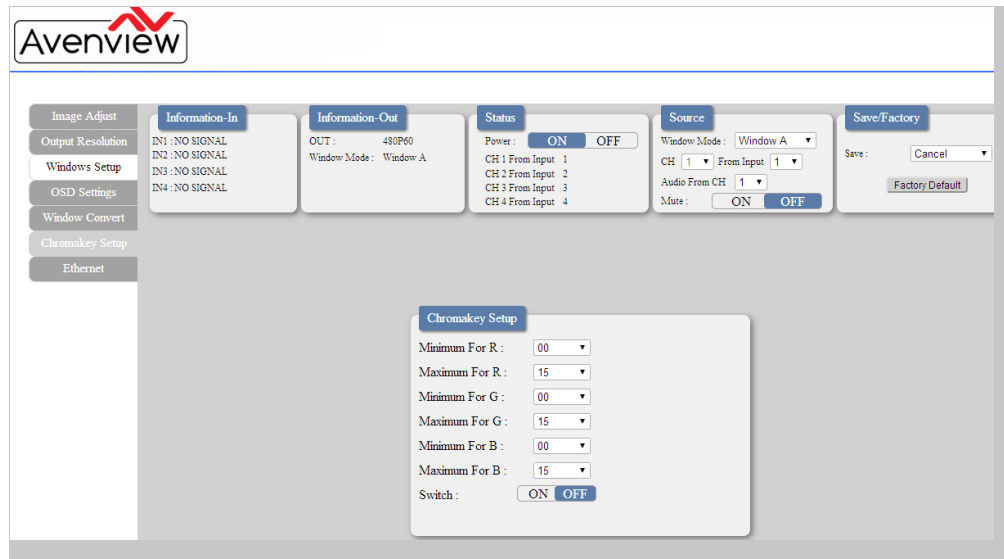
Click on the 'OSD Settings' tab to set the OSD function and position.



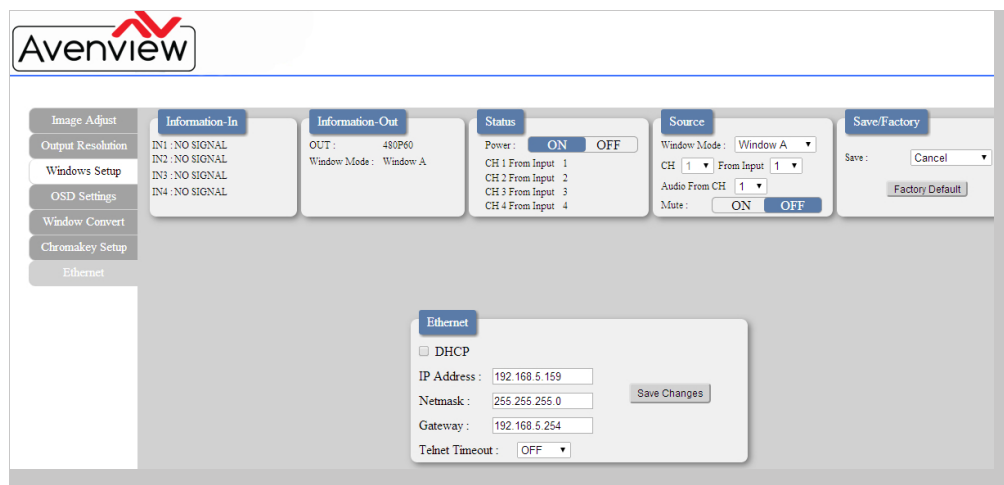
Click on the 'Window Convert' tab to set the output display angle. This function is only available under window A~D.



Click on the 'Chromakey Setup' tab to set the output display color. This function is only available under window E~H.



Click on the 'Ethernet' tab to reset the IP configuration. The system will ask for a reboot of the unit when any of these settings are changed. The IP address needed to access the Web GUI control will also need to be changed accordingly on the web address entry bar.



5. OSD MENU

MAIN MENU	1ST LAYER	2ND LAYER	3RD LAYER
I/O Setup	Output Resolution	480P	
		579P	
		720P50	
		720P60	
		1080P24	
		1080P25	
		1080P30	
		1080P50	
		1080P60	
		1024×768	
		1280×800	
		1280×1024	
		1366×768	
		1440×900	
		1600×900	
		1600×1200	
	1680×1050		
1920×1200			
	NATIVE		
	Menu Back		
	OSD Settings	Info Display	On/ Off
		H Offset	0~20 (5)
		V Offset	0~20 (5)
		Timeout	Off ~50
		Gain	0~10 (2)
	Menu Back		
Menu Exit			



Main Menu	1 st Layer	2 nd Layer	3 rd Layer
IMAGE ADJUST	Brightness Adjust	CH 1	0 ~ 100 (50)
		CH 2	0 ~ 100 (50)
		CH 3	0 ~ 100 (50)
		CH 4	0 ~ 100 (50)
		Value Reset	
		Menu Exit	
	Contrast Adjust	CH 1	0 ~ 100 (50)
		CH 2	0 ~ 100 (50)
		CH 3	0 ~ 100 (50)
		CH 4	0 ~ 100 (50)
		Value Reset	
		Menu Exit	
	Hue Adjust	CH 1	0 ~ 100 (50)
		CH 2	0 ~ 100 (50)
		CH 3	0 ~ 100 (50)
		CH 4	0 ~ 100 (50)
		Value Reset	
		Menu Exit	
	Saturation	CH 1	0 ~ 100 (50)
		CH 2	0 ~ 100 (50)
		CH 3	0 ~ 100 (50)
		CH 4	0 ~ 100 (50)
		Value Reset	
		Menu Exit	
	Picture Reset		
	Menu Exit		



Main Menu	1 st Layer	2 nd Layer	3 rd Layer
Window Setup	Chennel 1 Select	Size	CH1 Wxxx Hxxx
			Width Unit
			Width Ten
			Width Hundred
			Height Unit
			Height Ten
		Height Hundred	
		Position	CH1 Hxxx Vxxx
			Horizontal Unit
			Horizontal Ten
			Horizontal Hundred
			Vertical Unit
			Vertical Ten
			Vertical Hundred
		Image Output	On/Off
Window Reset			
Menu Exit			
Window Setup	Chennel 2 Select	Size	CH2 Wxxx Hxxx
			Width Unit
			Width Ten
			Width Hundred
			Height Unit
			Height Ten
		Height Hundred	
		Position	CH2 Hxxx Vxxx
			Horizontal Unit
			Horizontal Ten
			Horizontal Hundred
			Vertical Unit
			Vertical Ten
			Vertical Hundred
		Image Output	On/Off
Window Reset			
Menu Exit			



Main Menu	1 st Layer	2 nd Layer	3 rd Layer	
Window Setup	Chennel 3 Select	Size	CH3 Wxxx Hxxx	
			Width Unit	
			Width Ten	
			Width Hundred	
			Height Unit	
			Height Ten	
		Position	CH3 Hxxx Vxxx	
			Horizontal Unit	
			Horizontal Ten	
			Horizontal Hundred	
			Vertical Unit	
			Vertical Ten	
		Image Output	On/Off	Vertical Hundred
				Window Reset
				Menu Exit



MAIN MENU	1ST LAYER	2ND LAYER	3RD LAYER
Window Setup (Cont.)	Channel 4 Select	Size	CH4 Wxxx Hxxx
			Width Unit
			Width Ten
			Width Hundred
			Height Unit
			Height Ten
			Height Hundred
		Position	CH4 Hxxx Vxxx
			Horizontal Unit
			Horizontal Ten
			Horizontal Hundred
			Vertical Unit
			Vertical Ten
		Image Output	On/Off
	Priority	CH1→4,CH2→3, CH3→2,CH4→1	
	Window Reset		
	Menu Exit		
	Label Select	VIDEO 1	VIDEO 1 /2/3/4
		VIDEO 2	VIDEO 1/ 2 /3/4
		VIDEO 3	VIDEO 1/2/ 3 /4
VIDEO 4		VIDEO 1/2/3/ 4	
Menu Exit			



MAIN MENU	1ST LAYER	2ND LAYER	3RD LAYER	
Window Setup (Cont.)	Favors Store	FAV 1 Store	On/ Off /OK	
		FAV 2 Store	On/ Off /OK	
		FAV 3 Store	On/ Off /OK	
		FAV 4 Store	On/ Off /OK	
		Menu Exit		
	Menu Exit			
Window Convert	Channel 1 Convert	Mirror	On/ Off	
		Fade In-Out	Off /1.0/1.1/1.2 Convert /1.3/1.4 /1. 5/1.6/1.7/1.8/ 1.9/2.0/2.1/2.2/2 .3/ 2.4/2.5/2.6/2.7 /2.8/ 2.9/3.0	
		Rotation	R90/L90/Up-Side Down180/Off	
		Window Reset		
		Menu Exit		
		Channel 2 Convert	Mirror	On/ Off
	Fade In-Out		Off /1.0/1.1/1.2 Convert /1.3/1.4 /1. 5/1.6/1.7/1.8/ 1.9/2.0/2.1/2.2/2 .3/ 2.4/2.5/2.6/2.7 /2.8/ 2.9/3.0	
	Rotation		R90/L90/Up-Side Down180/Off	
	Window Reset			
	Menu Exit			



MAIN MENU	1ST LAYER	2ND LAYER	3RD LAYER
Window Convert (Cont.)	Channel 3 Convert	Mirror	On/ Off
		Fade In-Out	Off /1.0/1.1/1.2 Convert /1.3/1.4 /1.5/1.6/1.7/1.8/ 1.9/2.0/2.1/2.2/2.3/ 2.4/2.5/2.6/2.7 /2.8/ 2.9/3.0
		Rotation	R90/L90/Up-Side Down180/Off
		Window Reset	
		Menu Exit	
		Channel 4 Convert	Mirror
	Fade In-Out		Off /1.0/1.1/1.2 Convert /1.3/1.4 /1.5/1.6/1.7/1.8/ 1.9/2.0/2.1/2.2/2.3/ 2.4/2.5/2.6/2.7 /2.8/ 2.9/3.0
	Rotation		R90/L90/Up-Side Down180/Off
	Window Reset		
	Menu Exit		
	*Chromake Setup		Minimum For R
		Maximum For R	000~255 (15)
Minimum For G		000~255 (0)	
Maximum For R		000~255 (15)	
Minimum For B		000~255 (0)	
Maximum For B		000~255 (15)	
Switch		ON/ OFF	
Exit			



MAIN MENU	1ST LAYER	2ND LAYER	3RD LAYER
Ethernet Setup	IP Mode	Static/DHCP	
	Static Set	IP/Mask/Gate	
	Byte1 High	XXX 192 255 192	000~255
	Byte2	XXX 168 255 168	000~255
	Byte3	XXX 5 255 5	000~255
	Byte4 Low	XXX 159 0 254	000~255
	Re-Link	No /Yes	
	Exit		
Information	Static/DHCP IP	LINKED/NOT LINKED	
	IP	IP/Mask/Gate	
	Mask	XXX.XXX.XXX.XXX	
	Gate	XXX.XXX.XXX.XXX	
	Mac	XXX.XXX.XXX.XXX	
	Sink HDMI /DVI		
	Model xxxxxxx		
	Native xxxxxxx		
	F/V version		
Menu Exit			

Note:

1. Chromakey Setup only works when CH 1 and CH 2 are selected. CH 1 is the background and CH 2 is the top layer to be overlaid.
2. The Chromakey function is designed for overlapping two video images (such as news reports, weather forecasts or educational videos). The background color of CH 2 is usually a single, solid, color which can be easily removed. The RGB setting is for the CH2 video where the minimum setting figures cannot be greater than the maximum figures and the maximum figures cannot be lower than the minimum setting figures.
3. Figures in BOLD are default settings.





Control Your Video

TECHNICAL SUPPORT

CONTACT US



Phone: 1 (866) 508 0269



Email: support@avenview.com



USA Head Office Avenview Corp. 275 Woodward Avenue Kenmore, NY 14217

USA Head Office

Office Avenview
Corp. 275 Woodward Avenue
Kenmore, NY 14217
Phone: +1.716.218.4100 ext223
Fax: +1.866.387-8764
Email: info@avenview.com

Canada Sales

Avenview
151 Esna Park Drive, Unit 11 & 12
Markham, Ontario, L3R 3B1
Phone: 1.905.907.0525
Fax: 1.866.387.8764
Email: info@avenview.com

Avenview Europe

Avenview Europe
Demkaweg 11
3555 HW Utrecht
Netherlands
Phone: +31 (0)85 2100- 613
Email: info@avenview.eu

Avenview Hong Kong

Unit 8, 6/F, Kwai Cheong Centre,
50 Kwai Cheong Road,
Kwai Chung, N.T.
Hong Kong
Phone: 852-3575 9585
Email: wenxi@avenview.com

Disclaimer

While every precaution has been taken in the preparation of this document, Avenview Inc. assumes no liability with respect to the operation or use of Avenview hardware, software or other products and documentation described herein, for any act or omission of Avenview concerning such products or this documentation, for any interruption of service, loss or interruption of business, loss of anticipatory profits, or for punitive, incidental or consequential damages in connection with the furnishing, performance, or use of the Avenview hardware, software, or other products and documentation provided herein.

Avenview Inc. reserves the right to make changes without further notice to a product or system described herein to improve reliability, function or design. With respect to Avenview products which this document relates, Avenview disclaims all express or implied warranties regarding such products, including but not limited to, the implied warranties of merchantability, fitness for a particular purpose, and non-infringement.